



Report to the Behavioral Health
Oversight Committee
June 13, 2007

Trends in Use of Inpatient Hospital Services

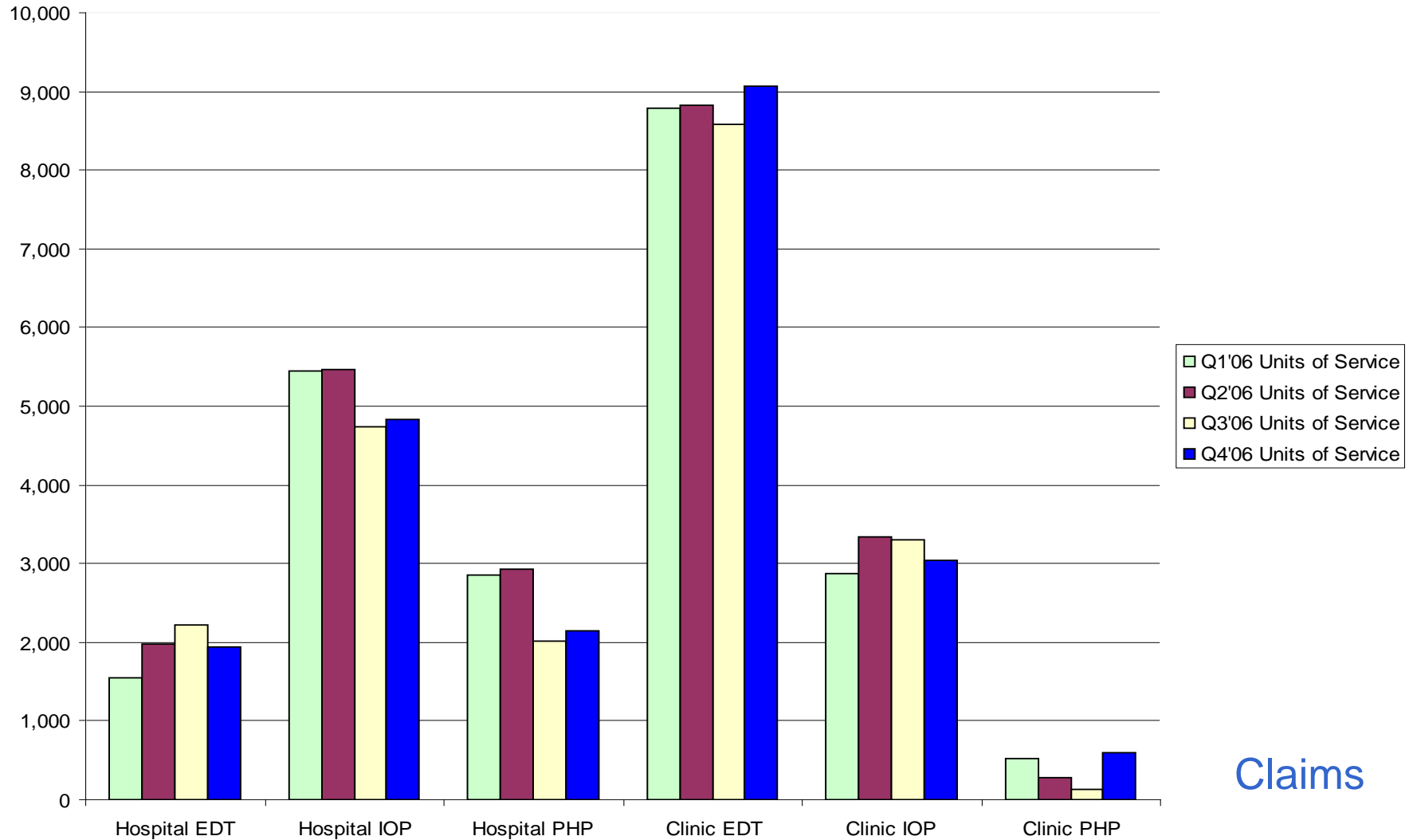
Children and Adolescents

- About 750-950 children served per quarter
- About 16,000 days per quarter
- Average length of stay about 25 days
- Nearly 30% of inpatient hospital volume (more than 5,000 days per quarter) in discharge delay status
- Most are awaiting out of home treatment

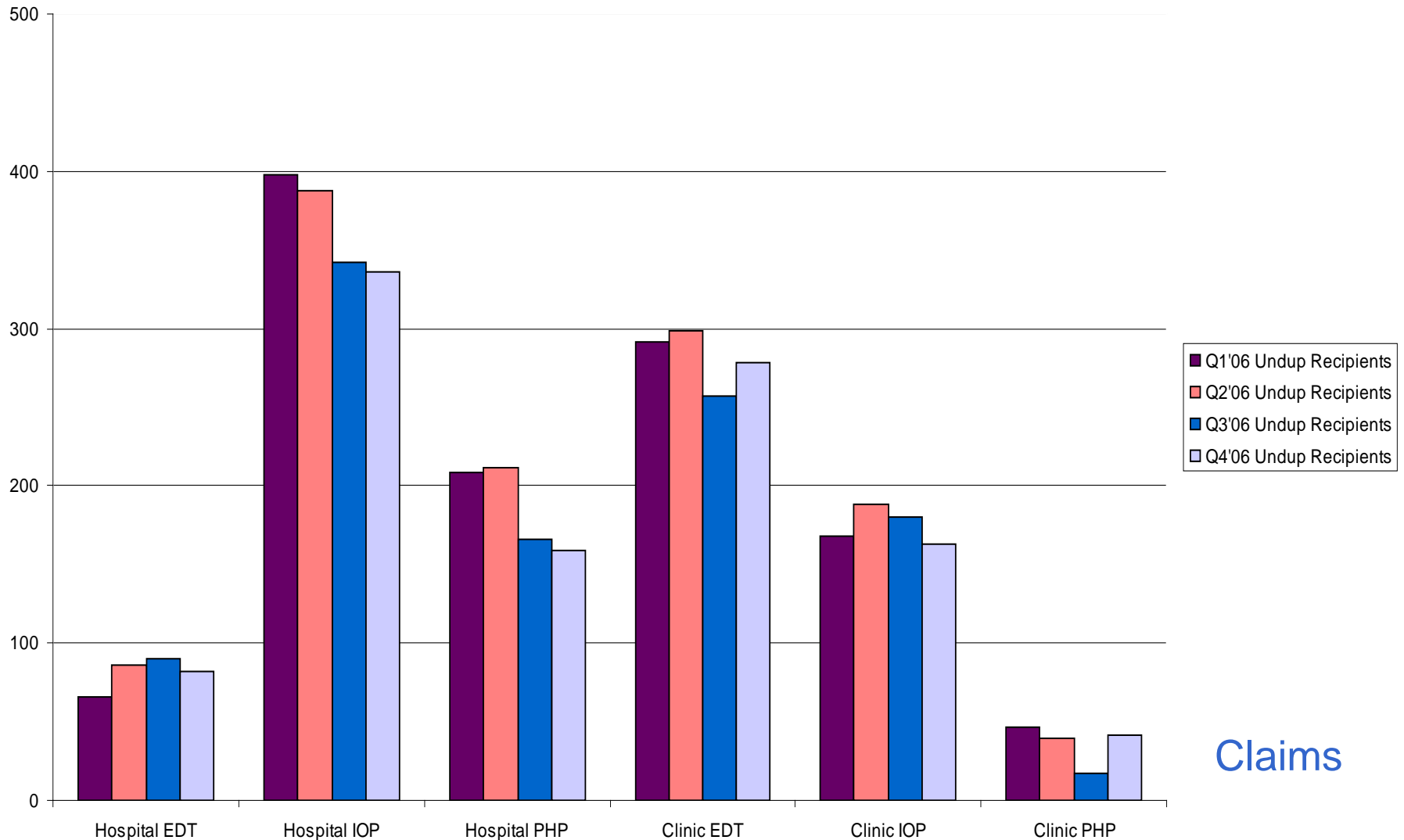
Trends in Use of Community Services

CHILDREN & ADOLESCENTS

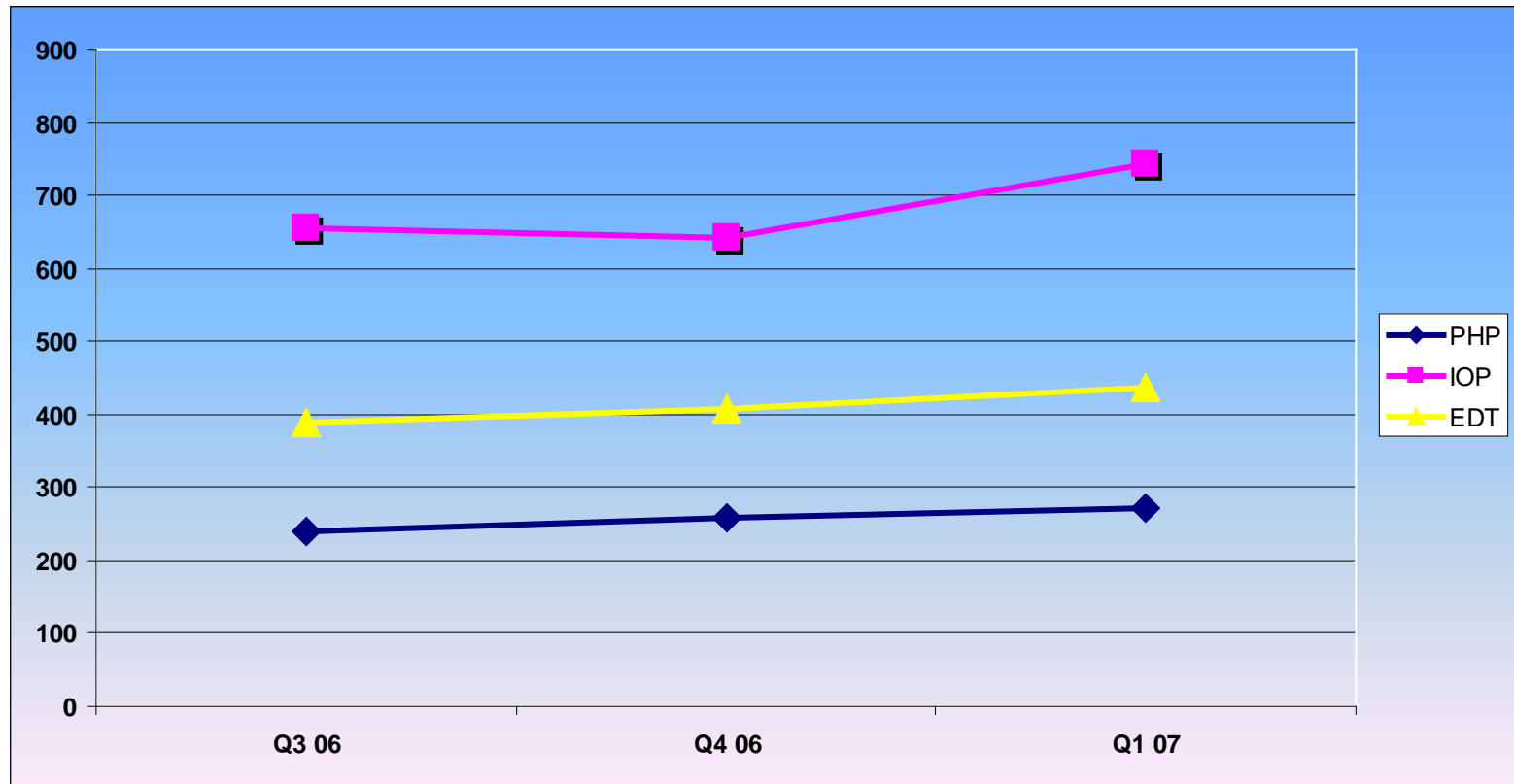
Intermediate Care Volume – Child



Intermediate Care Clients – Child

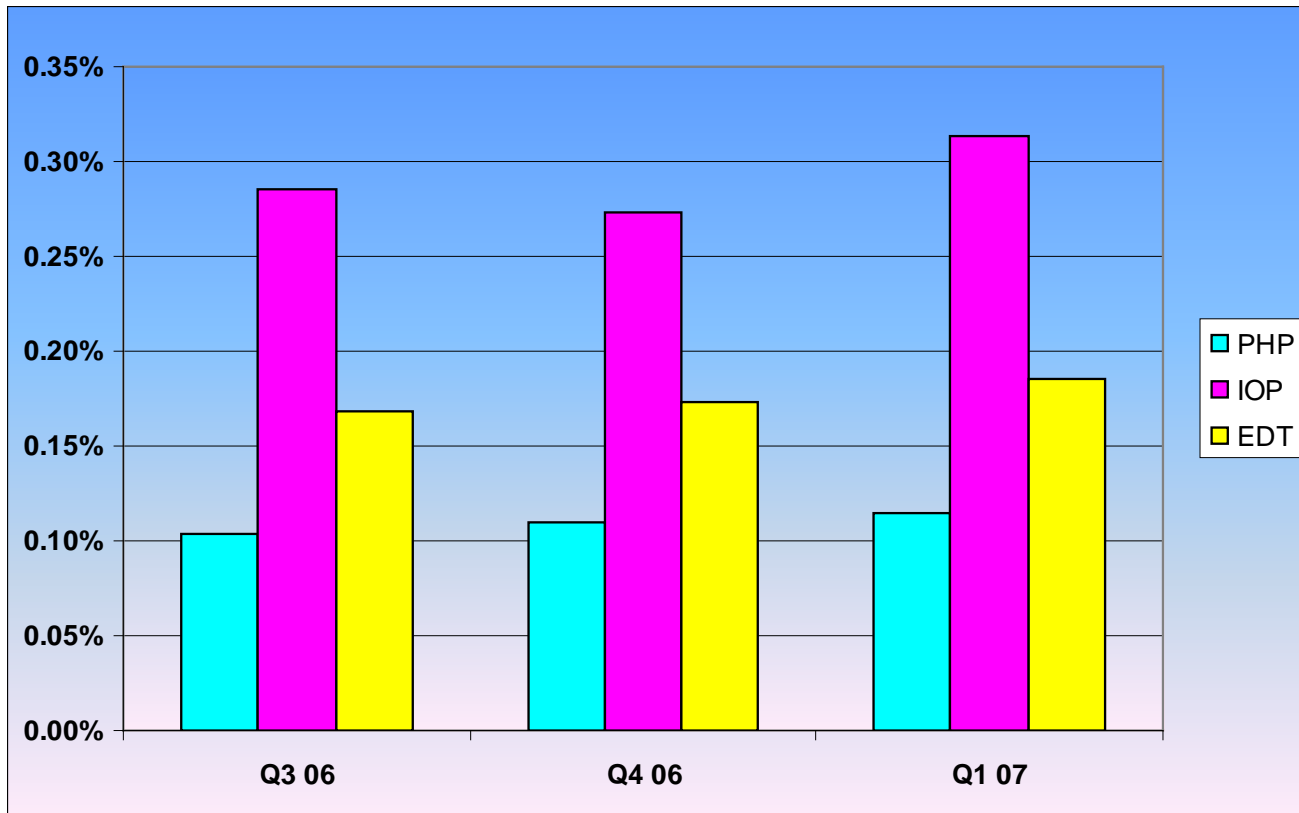


Intermediate Care Clients



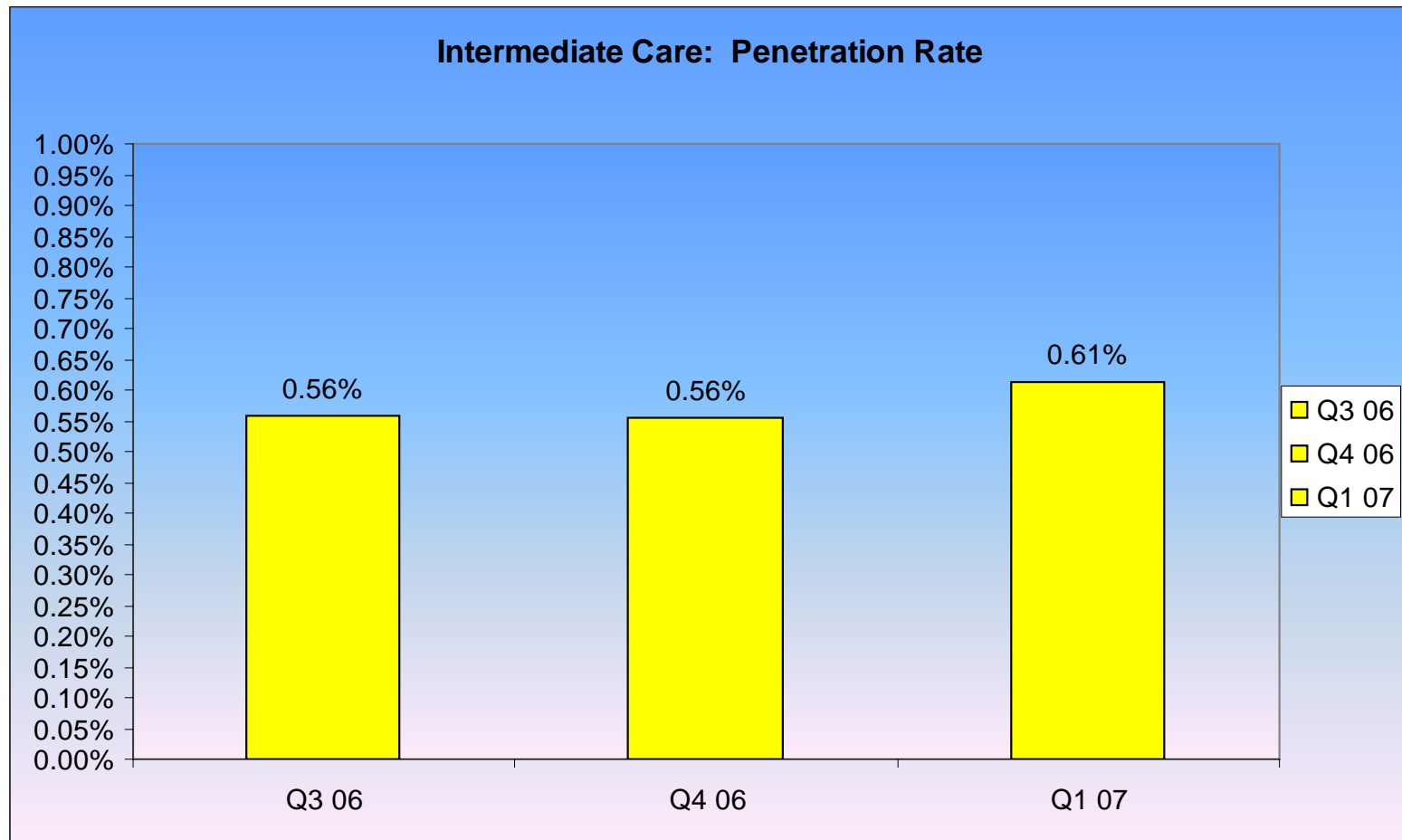
Authorizations

Intermediate Care: Penetration Rate



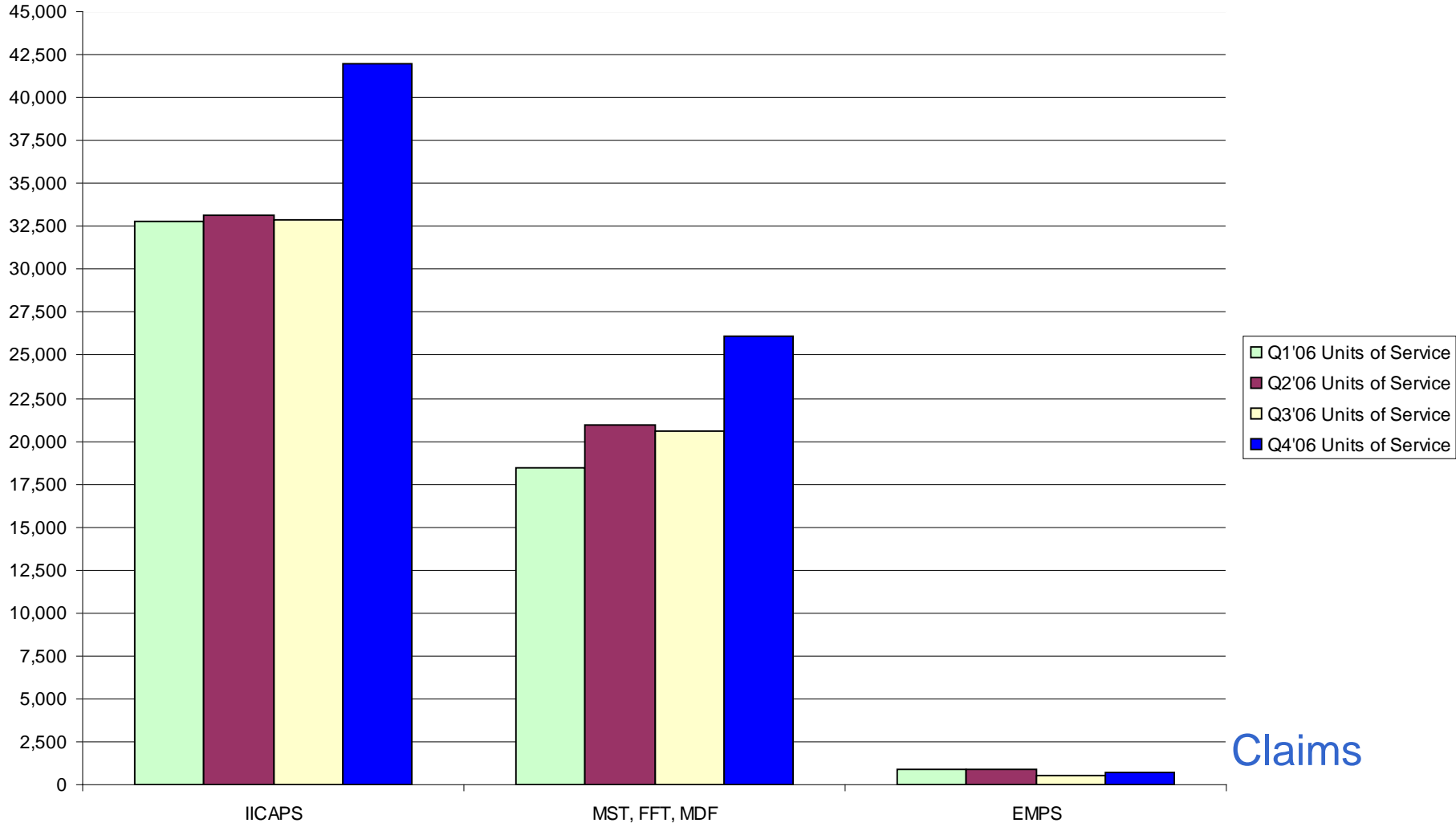
Authorizations

Intermediate Care: Penetration Rate

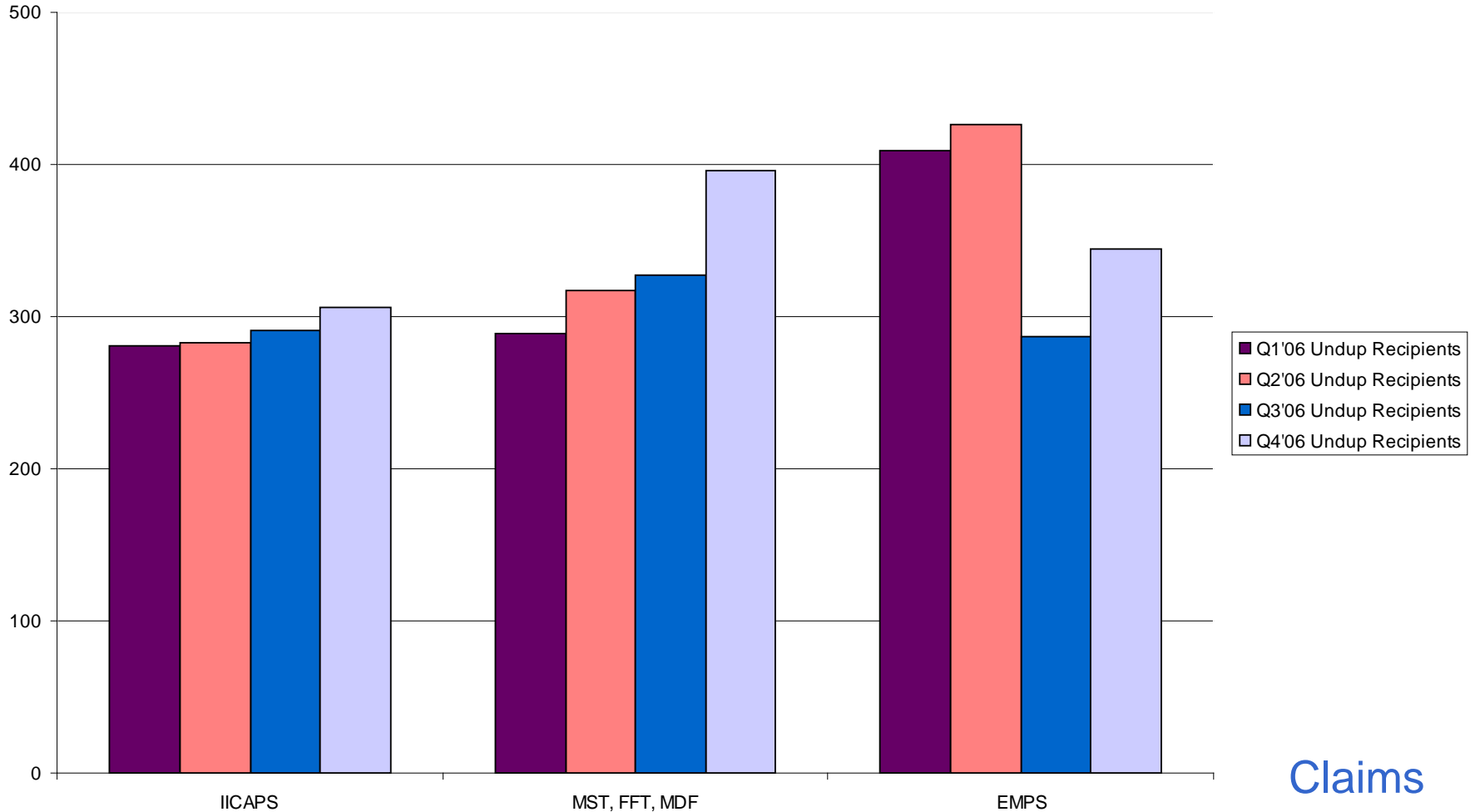


Authorizations

Home-Based Service Volume – Child

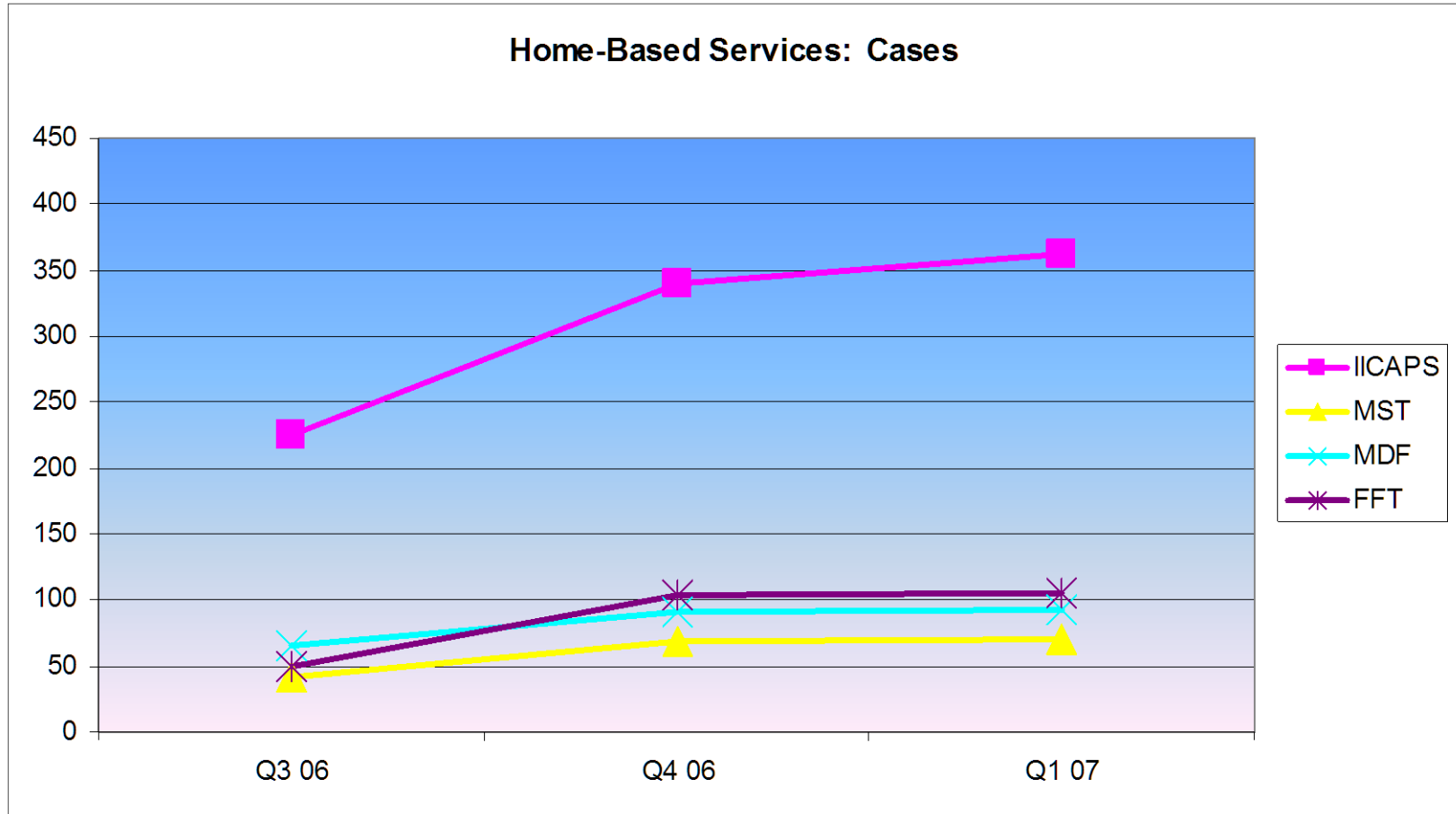


Home-Based Service Clients – Child

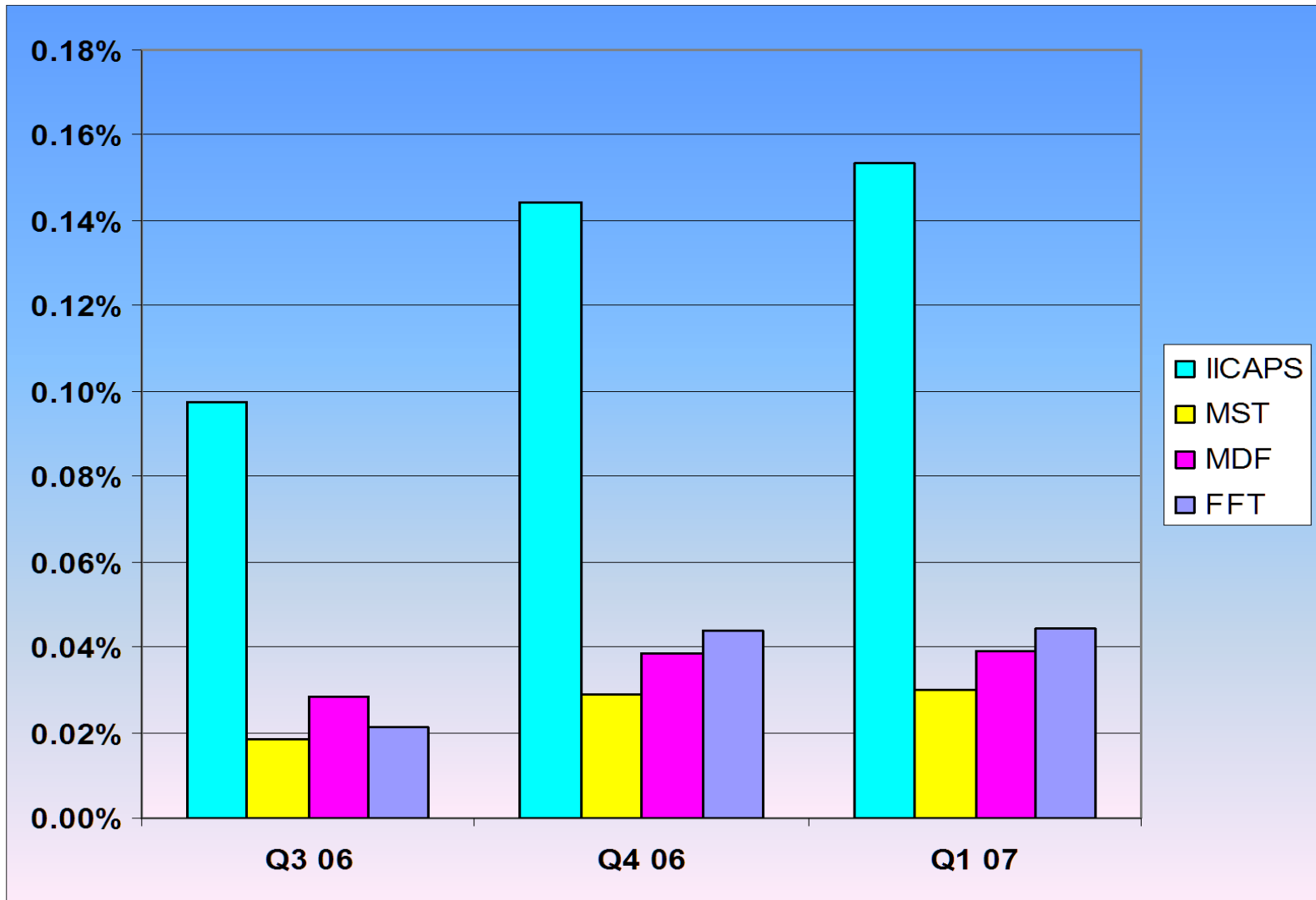


Claims

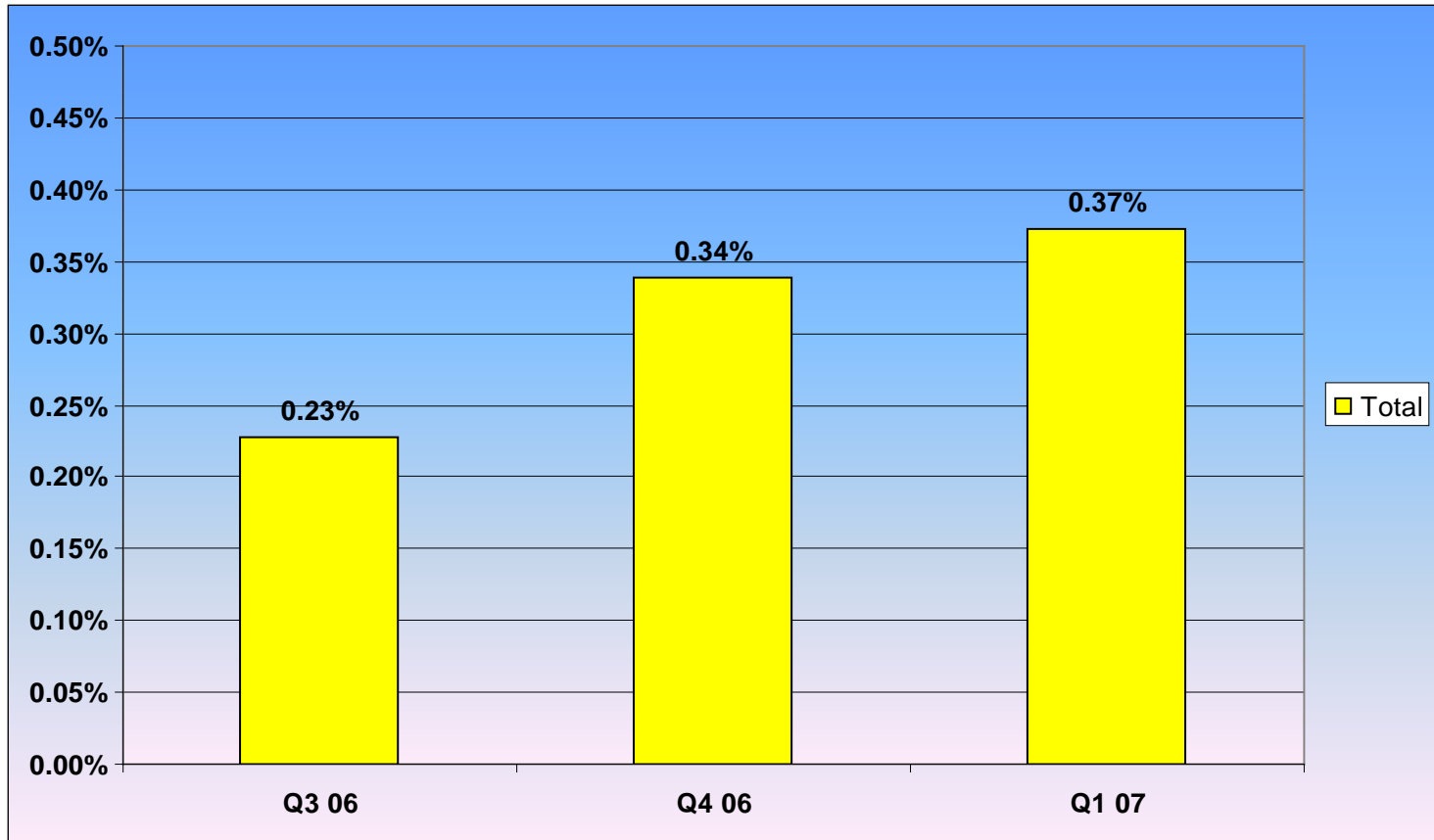
Home-Based Service Clients



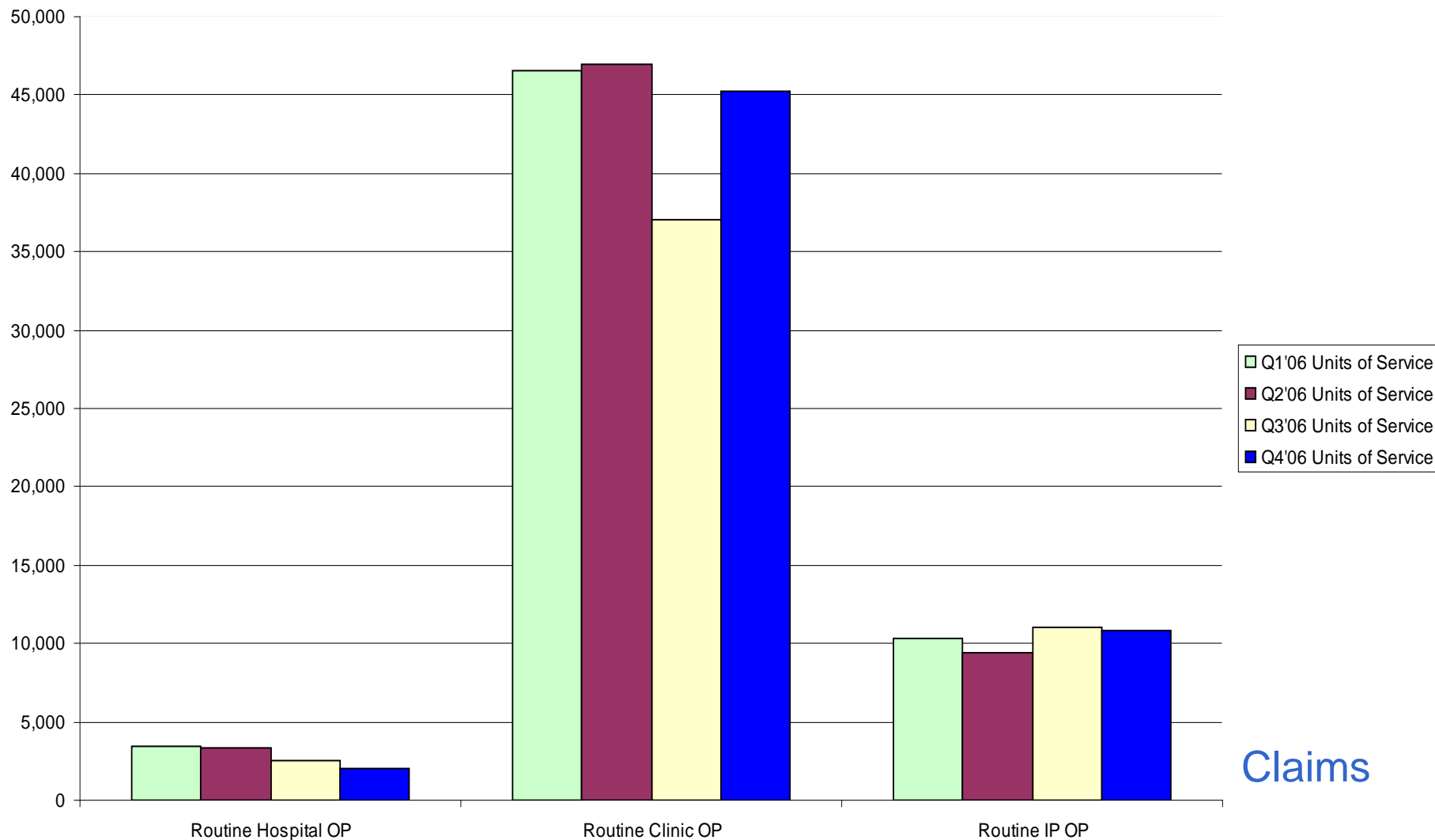
Home-Based Services: Penetration Rate



All Home-Based Services: Penetration Rate

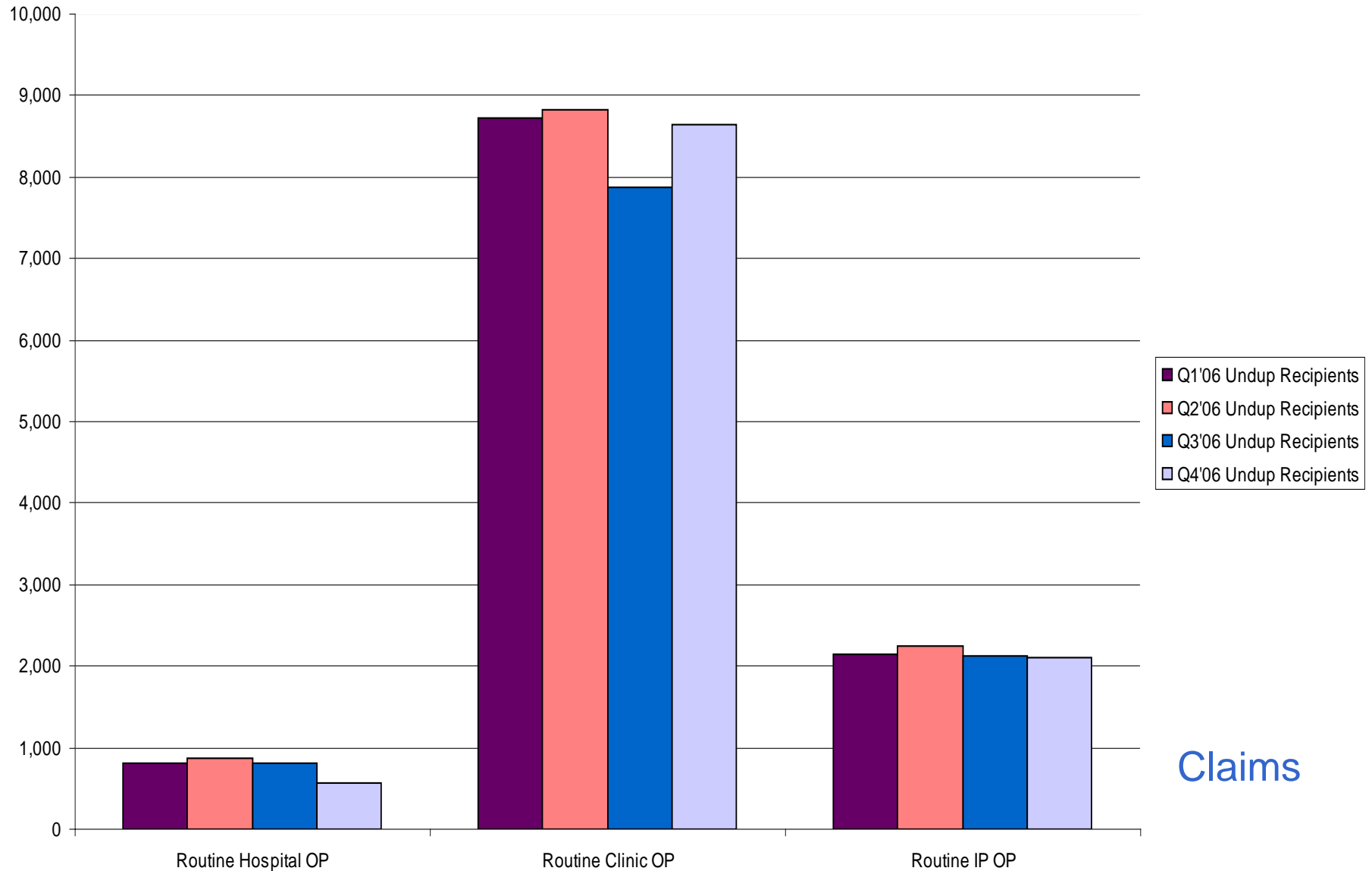


Outpatient Volume - Child



Claims

Outpatient Clients – Child



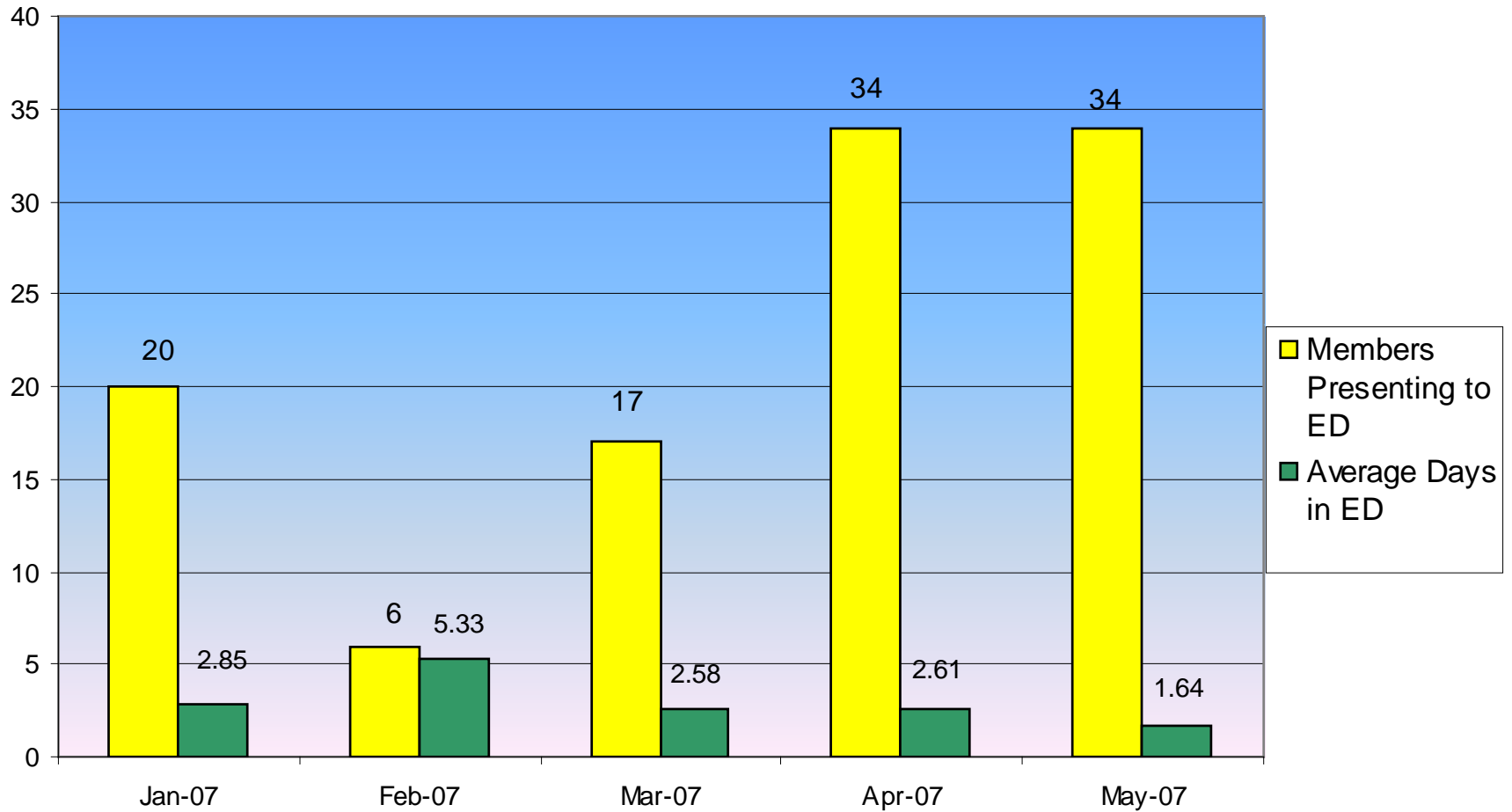
Claims

Emergency Department Management

ED Response Plan – High Volume Provider

- ValueOptions Intensive Care Manager/System Manager assigned to the CCMC ED
- Daily calls, onsite visits, and attendance in daily rounds
- After hours phone consultation and on-site visits on request
- Weekend coverage began on 4/13/07 and remains in place
- On-site assistance focus on community diversion or inpatient admission
- Peer specialists available to support families in the ED on request
- New CCMC/Wheeler MOU provides for on-site presence of EMPS
 - EMPS participation in daily rounds
 - EMPS meeting with family when diversion is an option

CCMC ED Analysis January – May 2007



CCMC ED Analysis

- Qualitative sense had been that the bulk of delayed dispositions were DCF youth from RTC or GH
- Data reveals that 65% of delayed children from biological, foster or other home settings
- Speaks to opportunities to positively impact the diversion rate of the EDs and increase referrals back to community based programs

CCMC ED Analysis, cont'd

- 43 Children in Delayed Status in Q1 of 2007
- 68 Children delayed for April and May
 - Mobile CT BHP clinician to highest volume ED initiated in early 4/2007 (daily – 7 days/week)
 - On-call CT BHP clinician to highest volume ED initiated in early 4/2007 (daily – 7 days/week)
 - Immediate impact:
 - Leveraging of outpatient service availability
 - ED feels supported
 - Work continues with local EMPS to provide additional support/follow up to ED and members

CCMC ED Analysis, cont'd

- Initial outcome of providing additional support to CCMC (i.e., ICM outreach, Wheeler, CHR, IOL and flex responsiveness of community providers) yields positive results
- January 75% of children admitted to Inpatient, 25% returned to previous setting
- May 36% of children admitted to Inpatient, 56% returned to previous setting